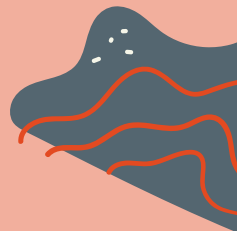
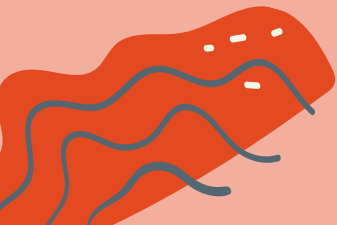


**Pathways Home
Program**

**DO YOU
OR A LOVED ONE
NEED HELP
ON THE OUTSIDE?**



Are you in jail or juvie and want help on the outside?

Between us we can make a difference.

We can help with

- Health and wellbeing
- Drug and alcohol concerns
- Finding a safe place to live
- Centrelink
- ID (Personal Identification)
- Court support
- School or TAFE
- Finding a job
- Connecting with family and culture

Join the program by speaking to your parole officer, SAPO, juvie worker, a family member, your lawyer, court support officer, community Elders, or someone you know and trust.

You can also self-refer to the program, by calling CRC directly, and asking to speak to a Pathways Home staff member.



We can help if you

- Are 10 to 24 years old
- Are leaving jail or a juvie centre
- Have ever been locked up
- Want support with drug and/or alcohol use
- Live in or return to the Greater Sydney metropolitan area* which includes the following areas:
 - Eastern Suburbs
 - Inner West
 - Northern Sydney
 - South Eastern Sydney
 - Sydney
 - South Western Sydney
 - Western Sydney


*excluding Hawkesbury, Blue Mountains, and Wollondilly LGAs.



Community Restorative Centre

251 Canterbury Rd
Canterbury NSW 2193
(02) 9288 8700

pathwayshome@crcnsw.org.au
www.crcnsw.org.au

 facebook.com/CommunityRestorativeCentre