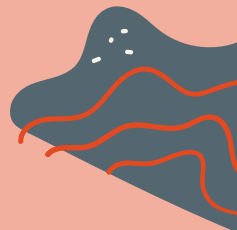
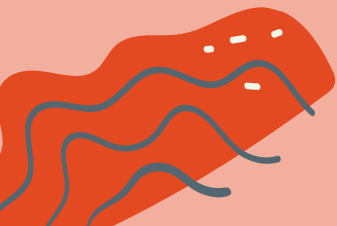




## Pathways Home Program

**DO YOU  
OR A LOVED ONE  
NEED HELP  
ON THE OUTSIDE?**



# Are you in jail or juvie and want help on the outside?

## Between us we can make a difference.

### We can help with

- Health and wellbeing
- Drug and alcohol concerns
- Finding a safe place to live
- Centrelink
- ID (Personal Identification)
- Court support
- School or TAFE
- Finding a job
- Connecting with family and culture

**Join the program by speaking to your parole officer, SAPO, juvie worker, a family member, your lawyer, court support officer, community Elders, or someone you know and trust.**

**You can also self-refer to the program, by calling CRC directly, and asking to speak to a Pathways Home staff member.**



### We can help if you

- Are 10 to 24 years old
- Are leaving jail or a juvie centre
- Have ever been locked up
- Want support with drug and/or alcohol use
- Live in or return to the Greater Sydney metropolitan area\* which includes the following areas:
  - Eastern Suburbs
  - Inner West
  - Northern Sydney
  - South Eastern Sydney
  - Sydney
  - South Western Sydney
  - Western Sydney

\*excluding Hawkesbury, Blue Mountains, and Wollondilly LGAs.



#### **Community Restorative Centre**

251 Canterbury Rd  
Canterbury NSW 2193  
(02) 9288 8700  
pathwayshome@crcnsw.org.au  
www.crcnsw.org.au



facebook.com/CommunityRestorativeCentre